

Holmes Building Systems, LLC

Austin Hunt Custom Series



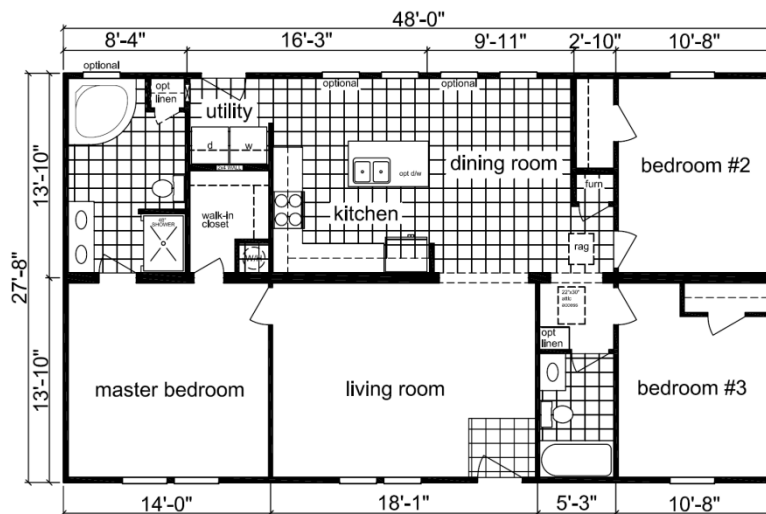
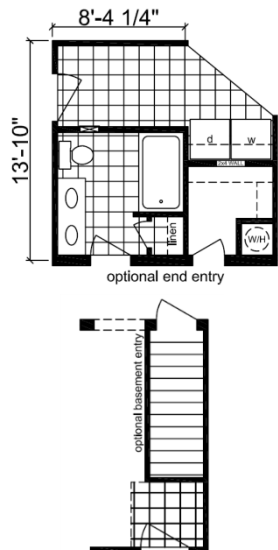
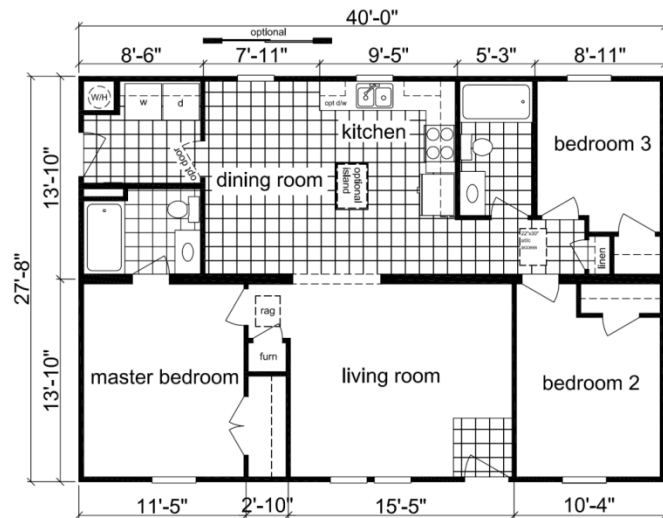
© 2013 Holmes Building Systems, LLC

Building A Better Home...

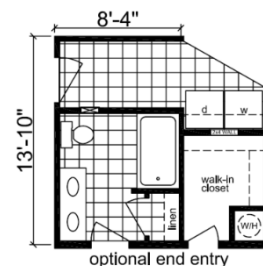
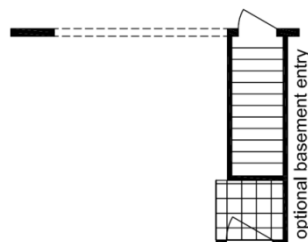
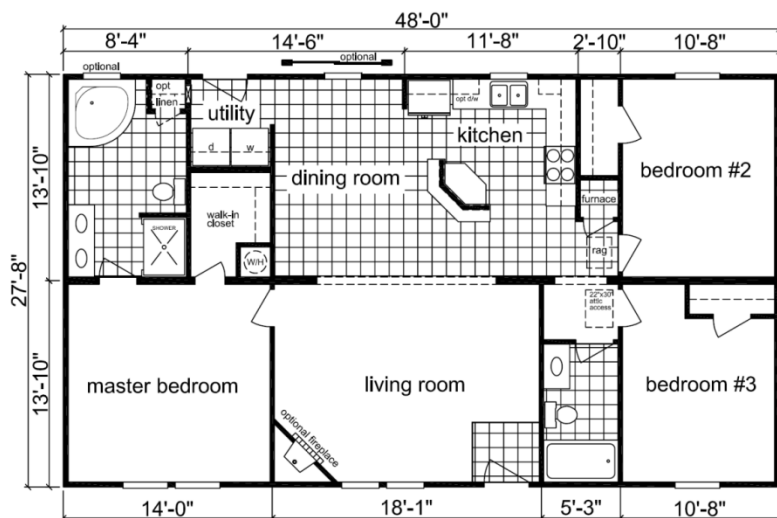




Henrietta
2840A
1107 sq ft

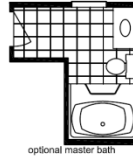
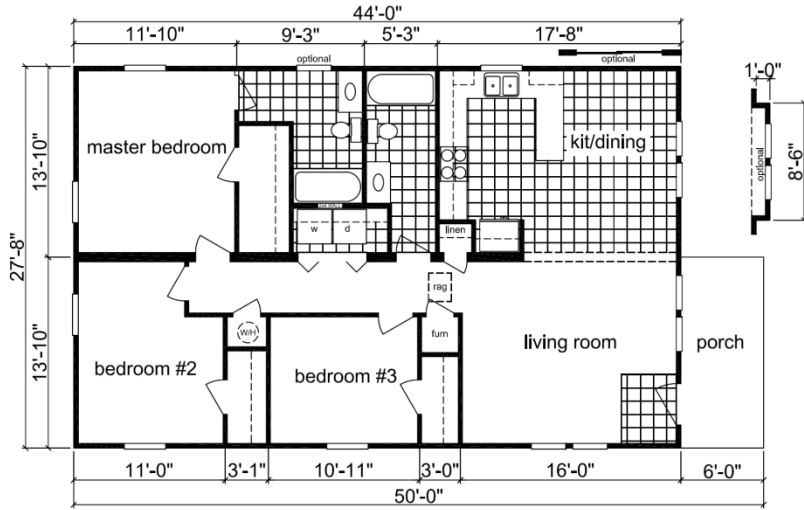


Altamont
2848A
1328 sq ft



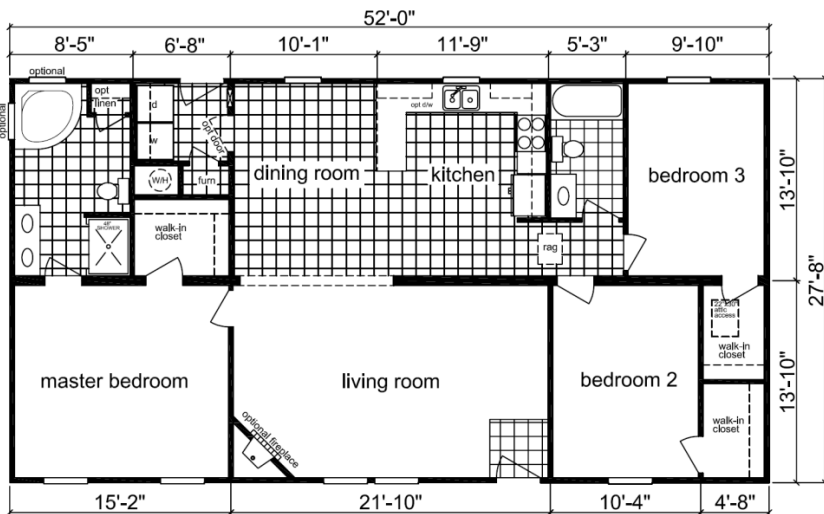
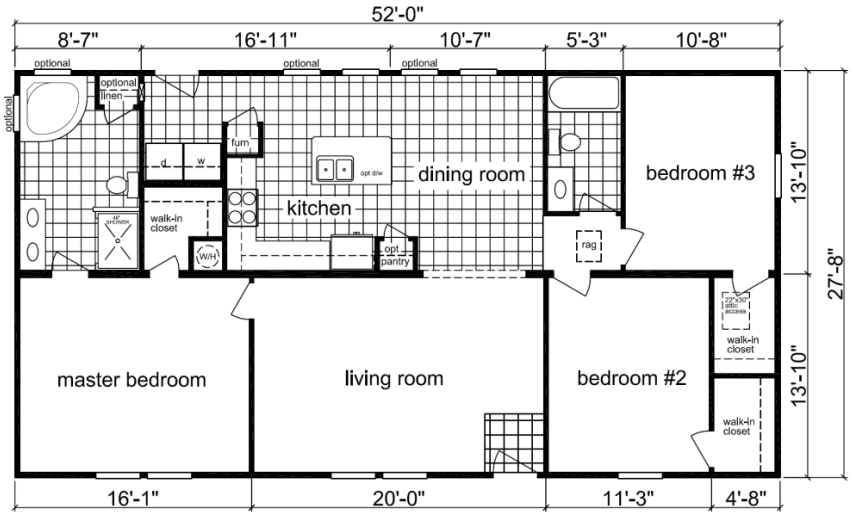
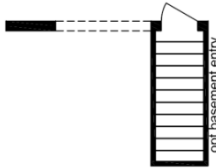
Riverbend
2848B
1328 sq ft





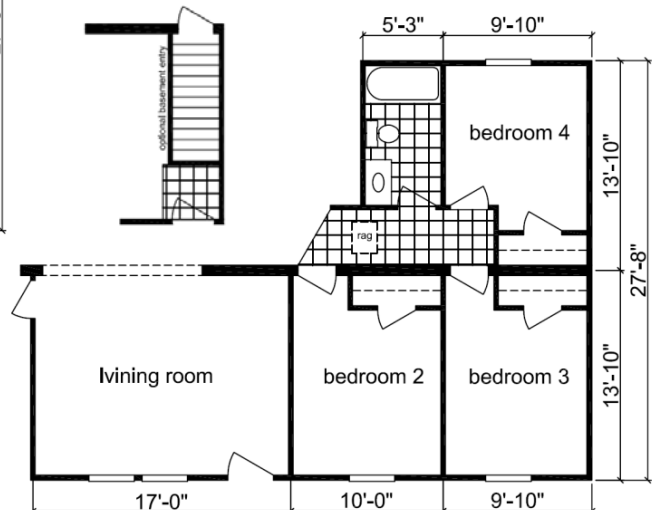
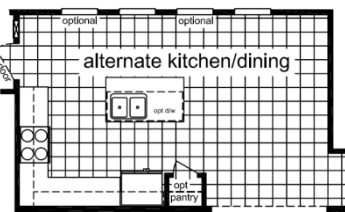
Shelby 2852A

1439 sq ft



Merry Oaks 2852B

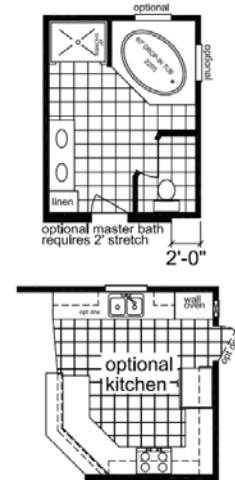
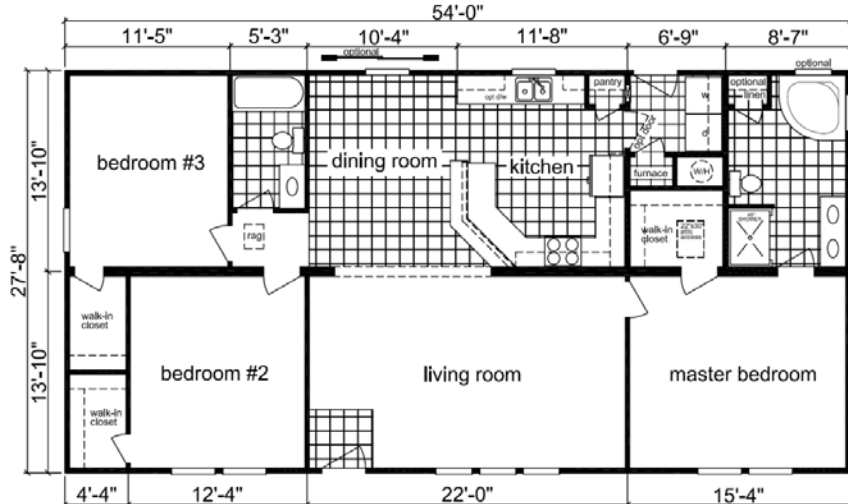
1439 sq ft



Arcadia

2854A

1494 sq ft



Westminster

2854B

*1494 sq ft

*includes porch

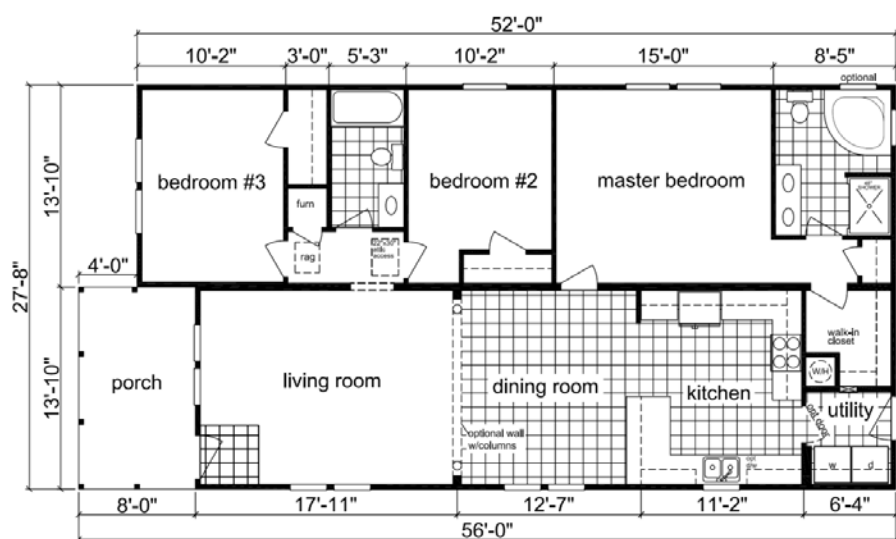


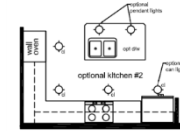
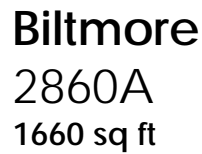
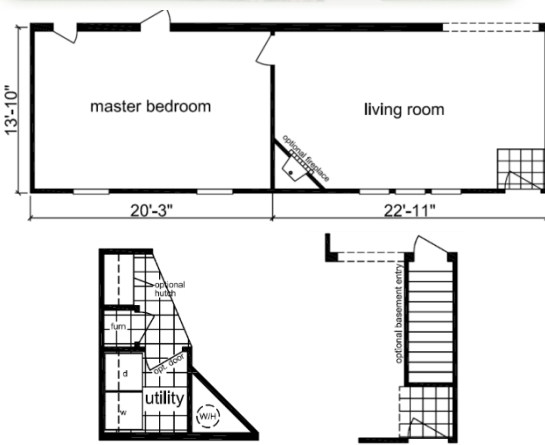
Elkin

2856A

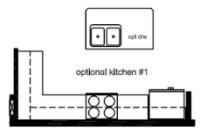
*1494 sq ft

*includes porch

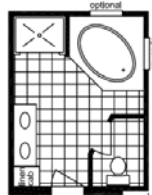
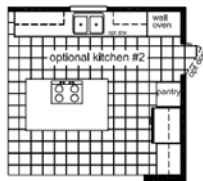
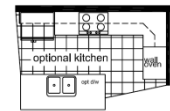
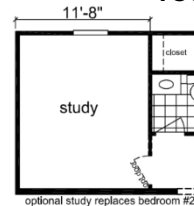
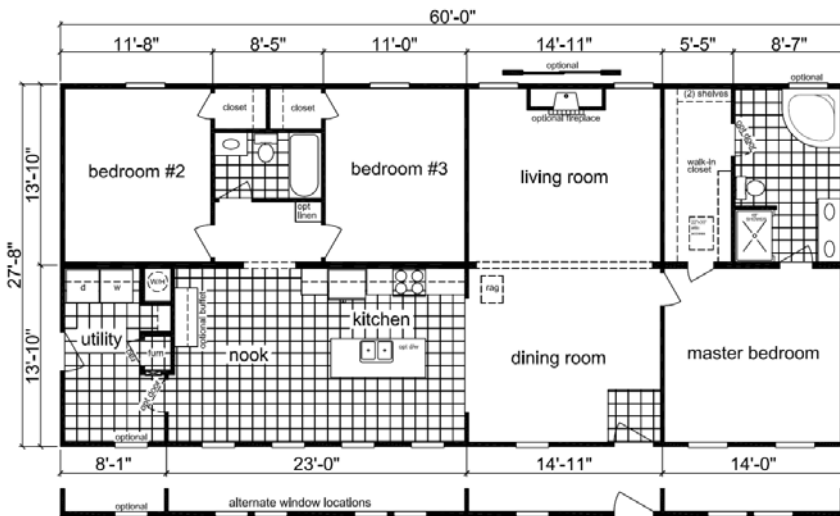




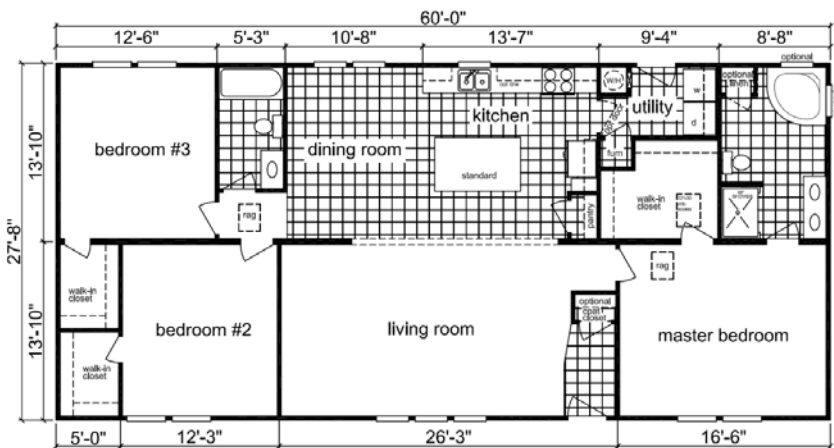
Optional Kitchen #2



Optional Kitchen #1



optional master bath
requires 2' stretch



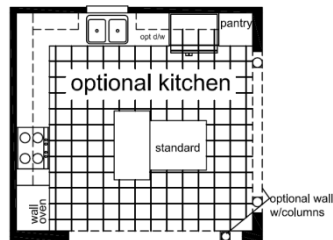
Morganton
2860D
1660 sq ft



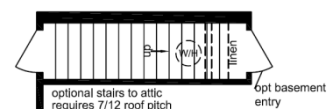
Austin Hunt Custom Series

www.HBShome.com

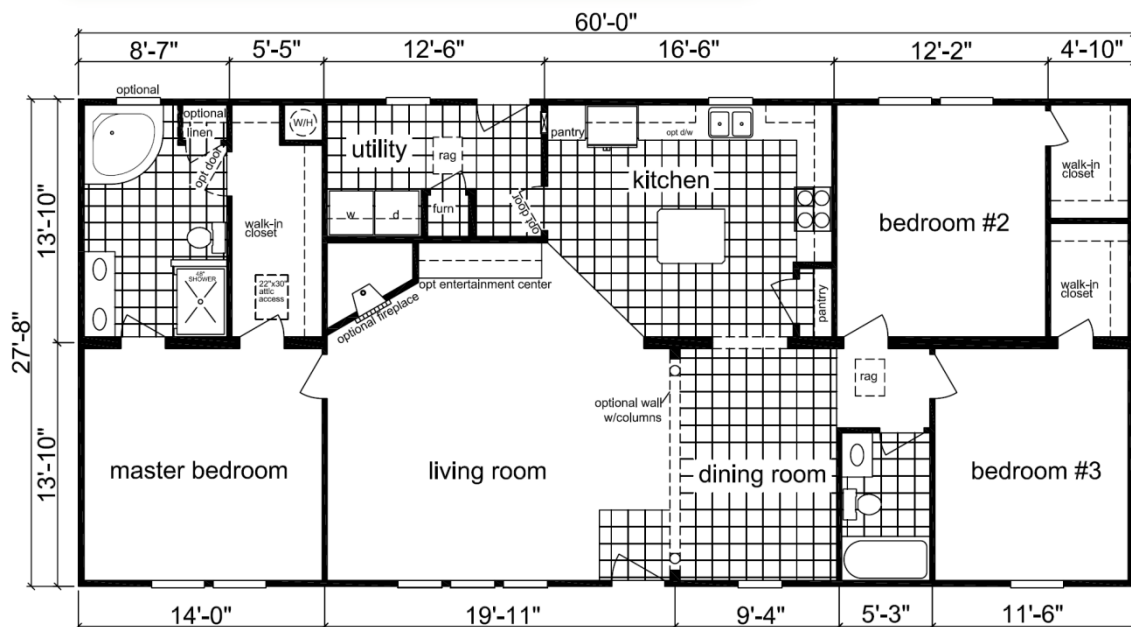
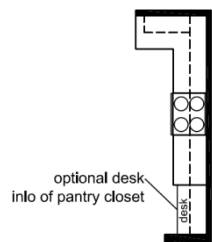
*Due to continuous product development and improvements, specifications and materials may be changed without notice. Square footage and other dimensions are approximate. Floor plans, renderings and images may be shown with optional and third party on-site built features. Consult with your Holmes Building Systems sales representative for details.



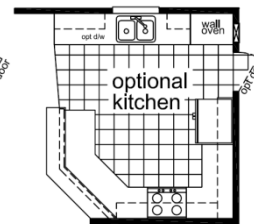
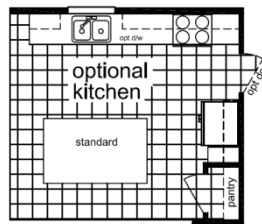
Nantahala
2860E
1660 sq ft



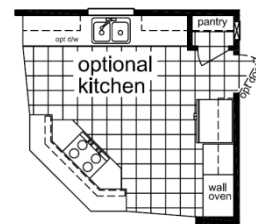
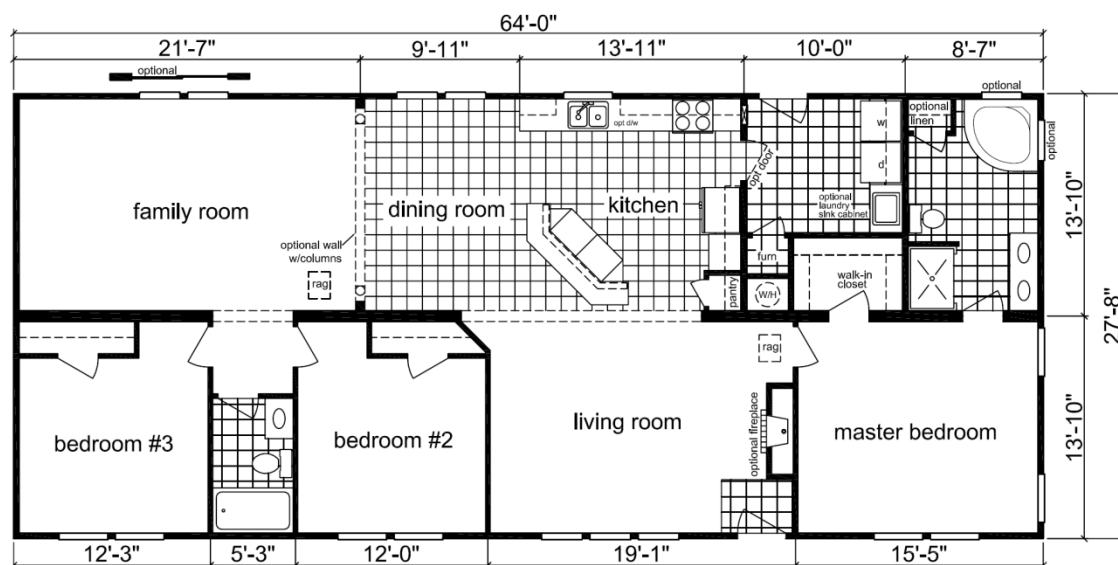
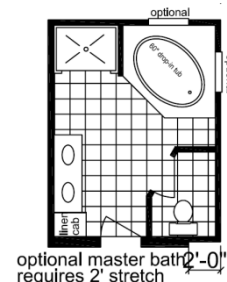
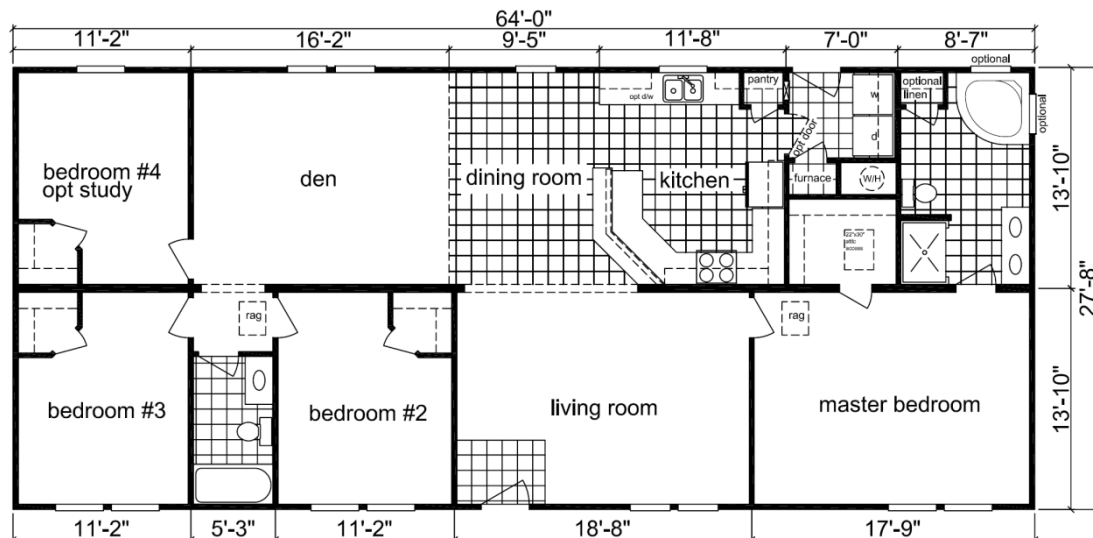
Marion
2860F
1660 sq ft



1771 sq ft



Ranch



1771 sq ft



Austin Hunt Custom Series

www.HBShome.com

*Due to continuous product development and improvements, specifications and materials may be changed without notice. Square footage and other dimensions are approximate. Floor plans, renderings and images may be shown with optional and third party on-site built features. Consult with your Holmes Building Systems sales representative for details.



Stanfield
2866A
 1826 sq ft





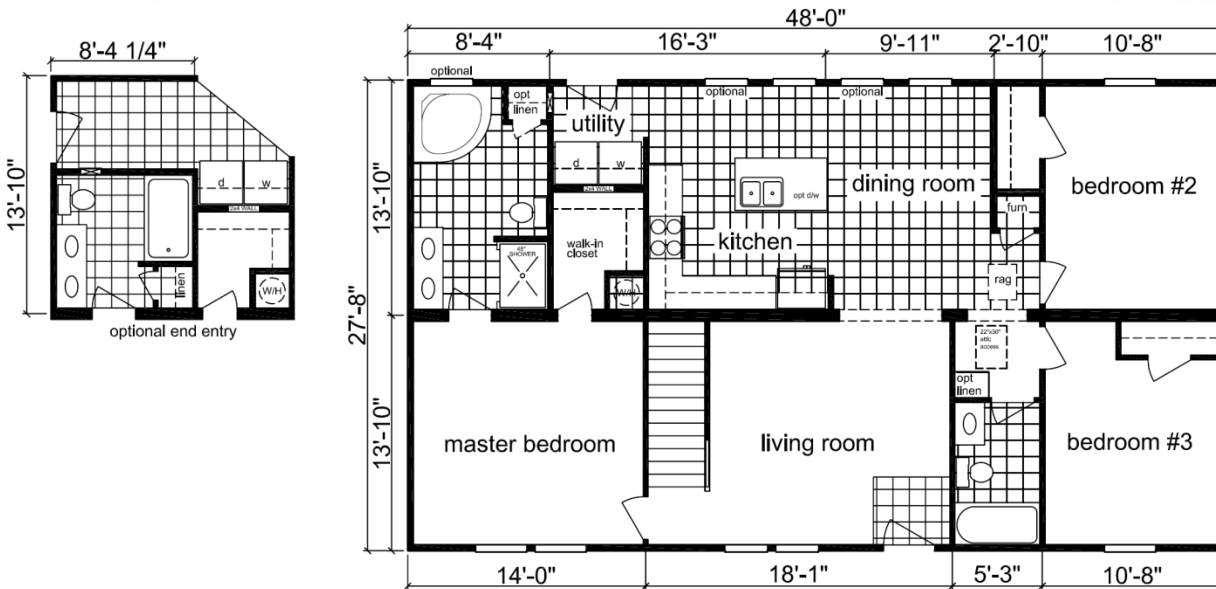


Snow Hill
 2876A
 2103 sq ft

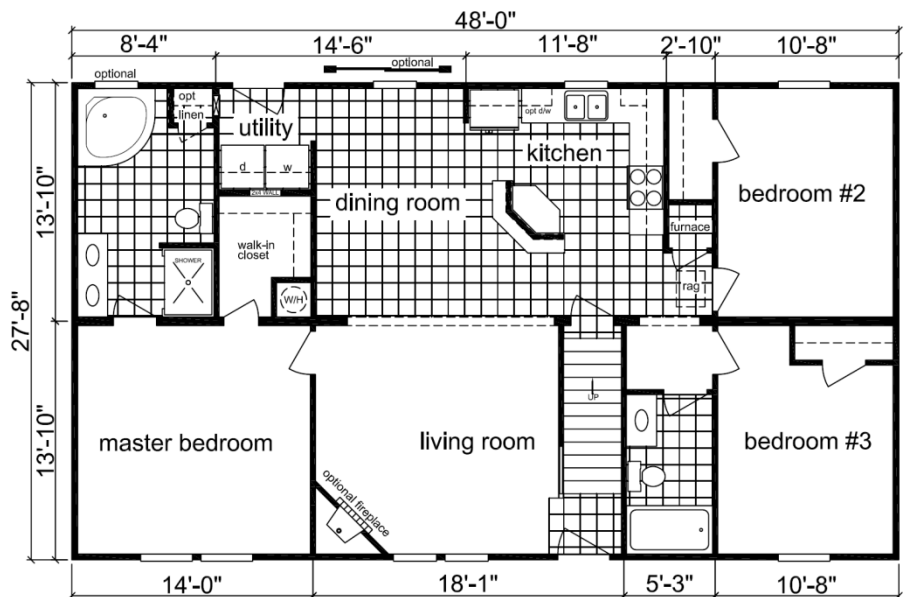




Tillery
2848A
1328 sq ft



Eastwood
2848B
1328 sq ft

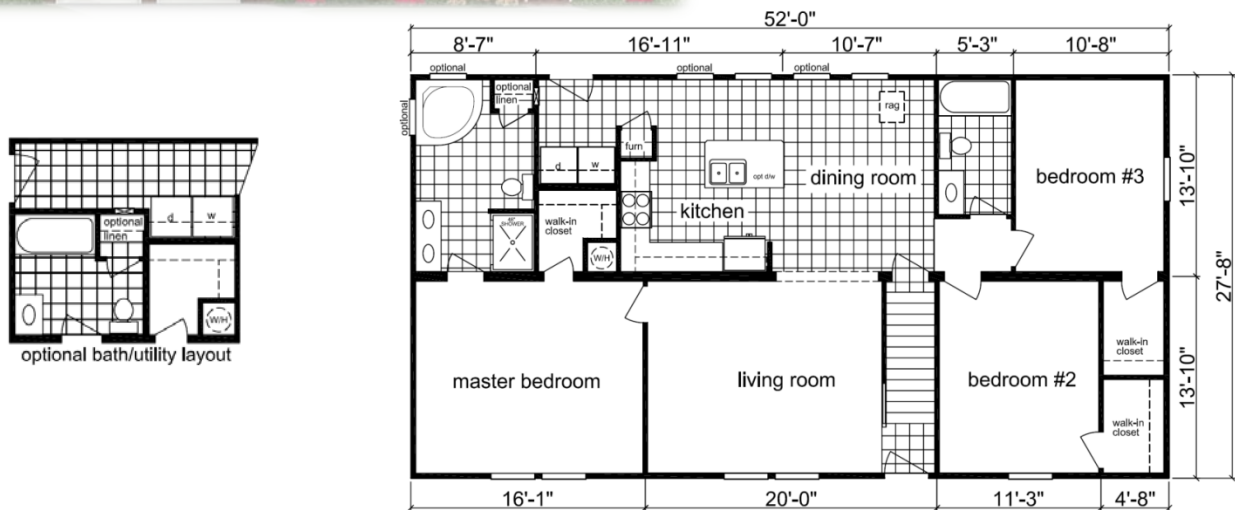




Alexandria

2852A

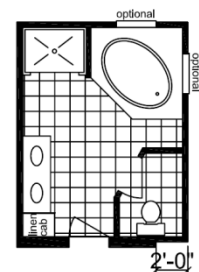
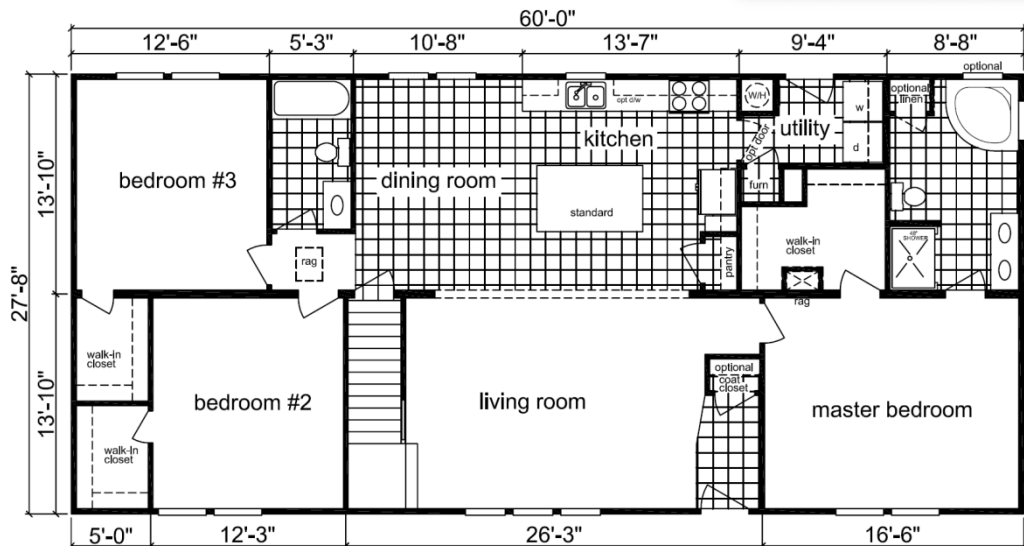
1438 sq ft



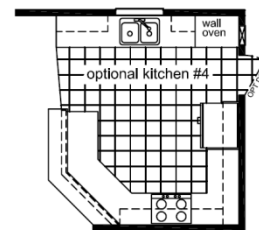
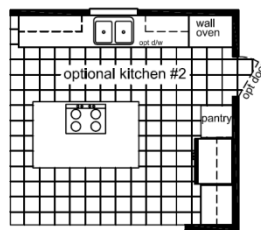
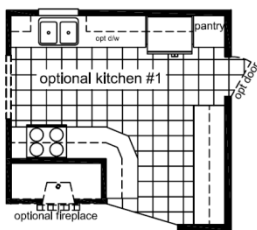
Rockwell

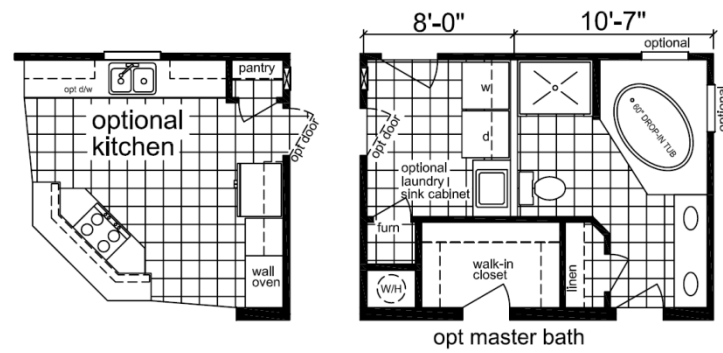
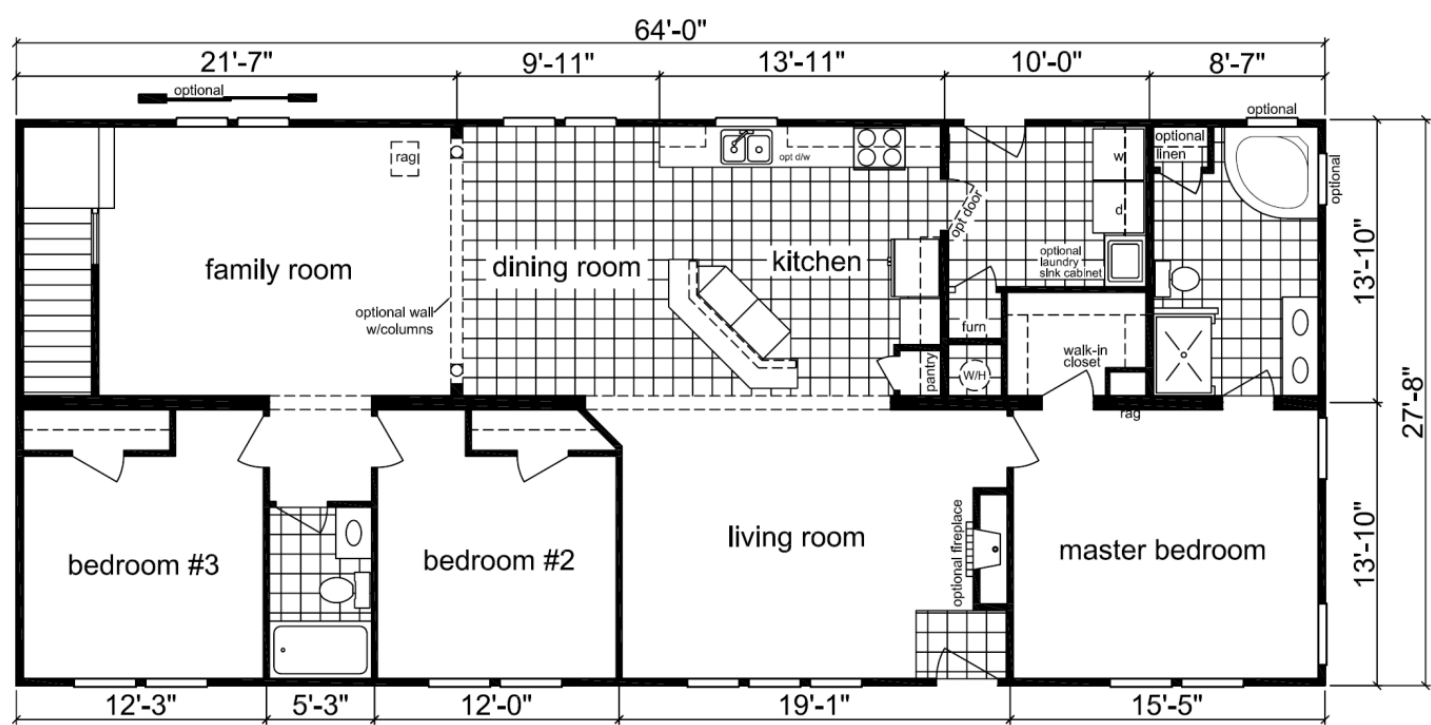
2860D

1660 sq ft



optional master bath
requires 2' stretch





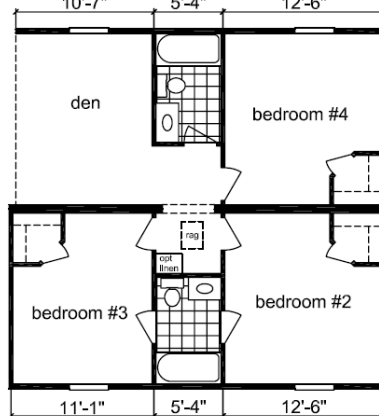
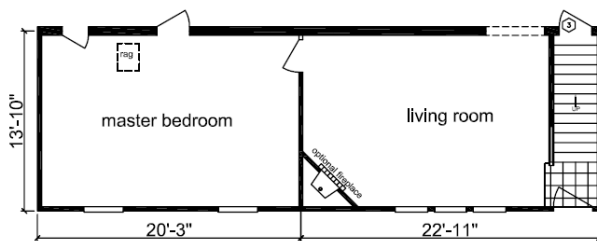
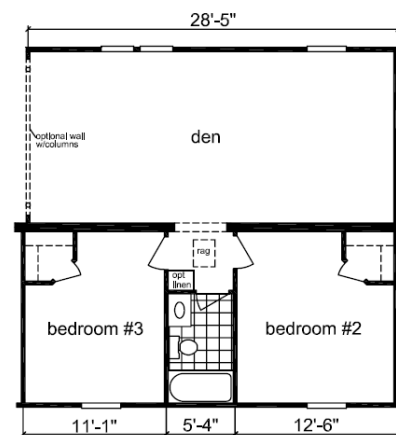
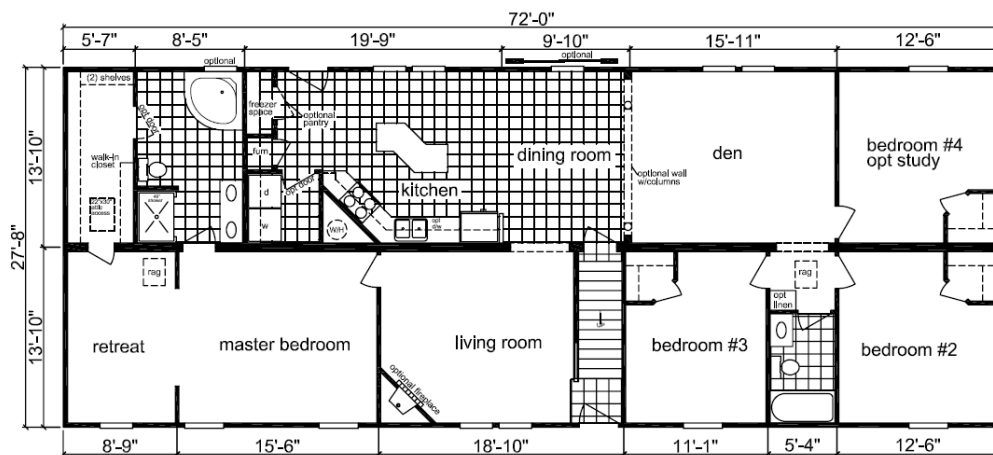
Sidney
2864B
1771 sq ft



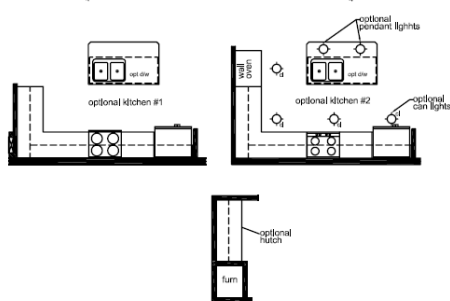


Manchester
 2868A
 1881 sq ft





Luxury Spa Bath Option



Guilford
2872A
1992 sq ft



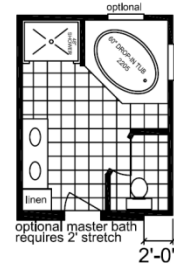
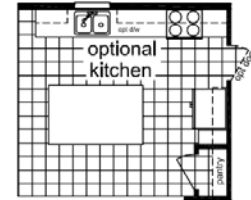


Hampstead

4254A

*1881 sq ft

*Includes porch



Marietta

4256A

*1771 sq ft

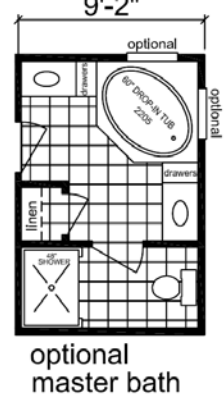
*Includes porch

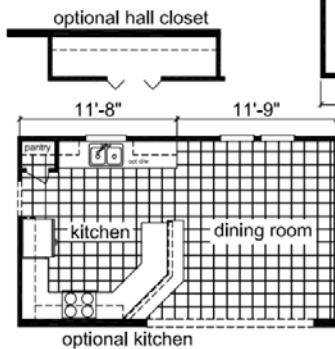
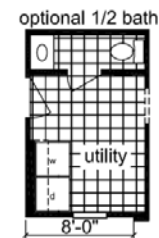




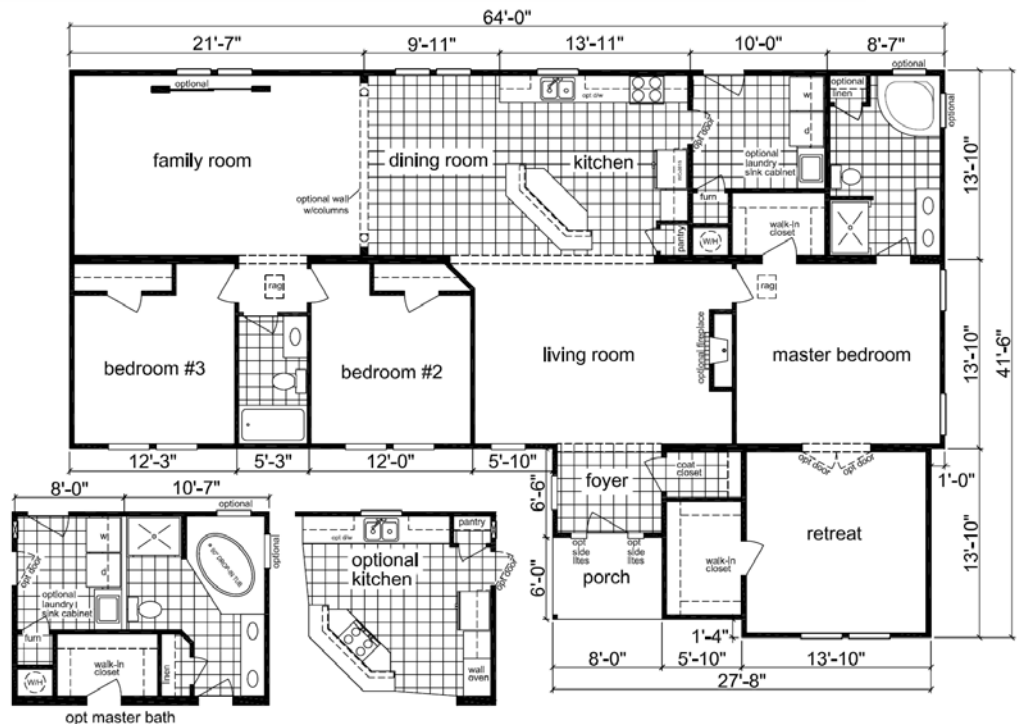


Kelly
4260D
 *1992 sq ft
 *Includes porch





Logan
4264A
*2158 sq ft
*Includes porch



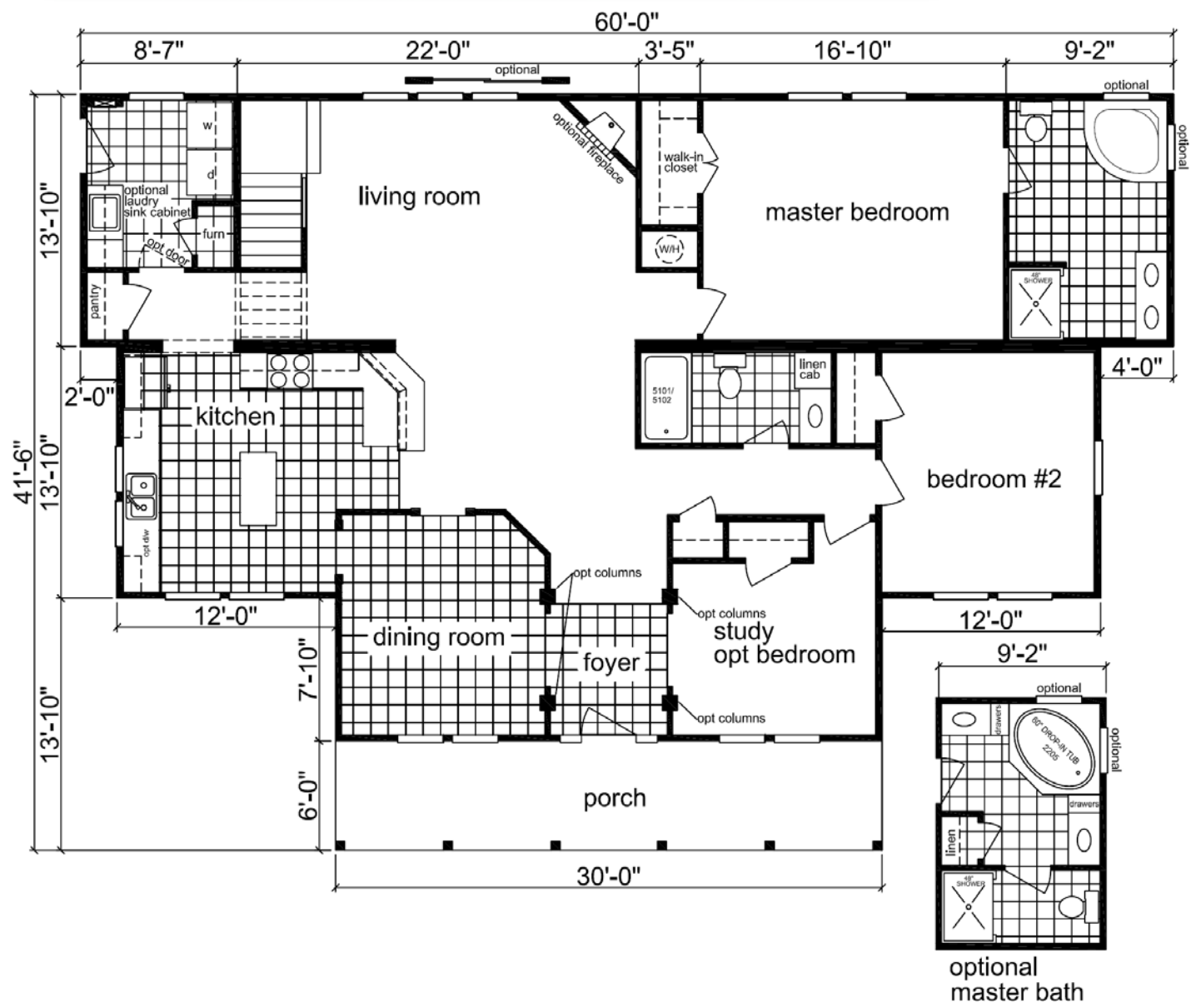


Fairmont

4260D

*1992 sq ft

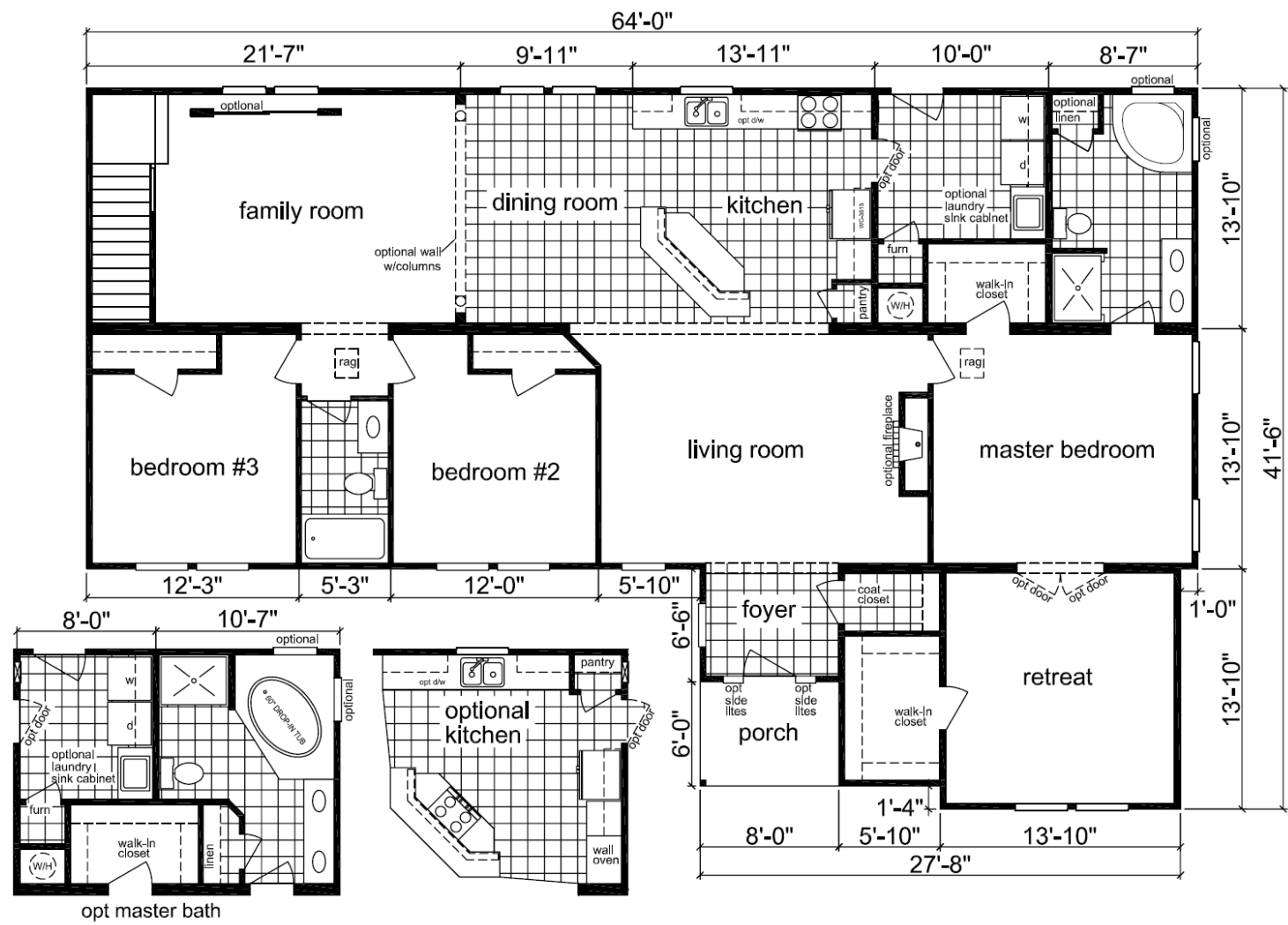
*Includes porch





Sunburst 4264A

*2158 sq ft
*Includes porch



Austin-Hunt Custom Series

"Standard Building Specifications"

Unseen Structural Features

- R 30 Blown Insulation in Ceilings
- R-13 Insulation in Walls
- R-19 Floor Insulation in Floors
- Wind Zone 110 MPH
- HVAC Vent Boots and Registers
- Furnace w/Straight Trunk Lines
- OSB Floor Decking 19/32"
- (2 X 10) Floor Joist 16" OC, (Off Frame)
- (2 X 8) Floor Joist 16" OC, (On Frame)
- (2 X 4) 8' Sidewalls 16" OC
- (2 X 4) Top & Bottom Plates
- (2 X 4) 8' Double Marriage Walls
- Engineered Roof Systems
- 5/12 Roof Pitch w/3 Tab Shingles

Plumbing

- Water Shut-Off Valves
- Pex Plumbing System
- 50 Gallon Water Heater
- Exterior Frost-Free Water Faucet
(1 @ STD Location Per Plan)
- Whole House Water Shut-Off
- Washer Hook-Up

Baths

- 48" Fiberglass Shower, M Bath (Per Plan)
- 54" Fiberglass Tub, M Bath (Per Plan)
- 60" Fiberglass Tub/Shower, Bath 2
- 30" High Lavatory(s) in M Bath
- 30" High Lavatory in Bath 2
- Towel Bar/Tissue Holder All Baths
- Dual Lever Bath Faucets
- China Lavatories in Baths
- Laminate Backsplash, Self Edge, & Countertops

Exterior Features

- D5 Park Side Vinyl Siding
- 15" Raised Panel Shutters (Front Door Side)
- 7/16" OSB Wrap Exterior Walls
- 36" 6 Panel Front Door w/No Storm
- 36" 6 Panel Rear Door w/No Storm
(Per Plan)
- 12" Eave Overhangs (All Sides)
- Insulated Windows w/Grids
- House Wrap
- 25 Year 3 Tab Shingles

Kitchen

- 30" White Coil Top Range
- 18 CF White Refrigerator w/Icemaker
- Tapered Wood Range-hood
- Dual Handle Faucet
- Stainless Steel Double Sink
- Laminate Backsplash, Self Edging & Countertops
- 30" Overhead Cabinets w/Matching Cove Molding
- Flat Panel Cabinets (Belwood Oak 2 Colors or Cambridge Birch 3 Colors)
- Kitchen Island (Per Plan)

Interior Appointments

- 5/8" Sheetrock Ceilings w/Stipple Finish
- (2 X 3) Interior Wall Construction
- 6 Panel Interior Doors
- Mortised Door Hinges
- Molded Closets
- 2 1/4" Crown Molding
- 3" Baseboard Molding
- 2 1/4" Window/Door Casing
- Metal Shelf over Washer/Dryer
- Finished 1/2" Sheetrock Thru-out
- Round Door Knobs

Electrical

- Brushed Nickel Light Fixtures
- Light Fixtures In All Bedrooms
- Ceiling Light in Dining Room
- White Exterior Light @ Frt. Door
- White Jelly Jar Light @ Rear/End Entry Door
- Exterior Electrical Outlets (@ Exterior Doors)
- 200 AMP Panel Box
- Smoke Detector Systems
- Dryer Hook-up

Flooring

- 16 oz. Mantra Carpet w/ Pad & Tack Strip (Shipped Loose)
- 6 lb. Re-Bond carpet Pad
- 16" x 16" Nafco Flooring in Designated Areas (Per Plan)

Popular Options

- On Frame Option
- 130 MPH Wind Zone
- Vent-less Propane Gas Fireplaces
- Perimeter Floor Registers
- 7/12 Roof Pitch 24" OC
- Upgrade Vinyl or Hardi Board Siding
- Upgrade Faucet Package

- 30 Yr. Architectural Shingles
- Deluxe Front Door(s)
- Sliding Glass Door(s)
- Deluxe Chandelier
- Recessed Can Lights
- Cloud Fluorescent Lights
- Pendant Lights
- 1" Mini Blinds

- Ceiling Fans
- Ceramic Backsplash
- Bull Nose Edging
- 25 oz. New Day Carpet
- 25 CF Side By Side
- Refrigerator
- Dishwasher
- Microwave



Building A Better Home...

We continuously strive to improve our homes and reserve the right to change specifications without notice

www.HBSHome.com

Holmes Building Systems, LLC.
2863 Plank Road, Box 520 * Robbins, NC 27325
Ph: 910.948.2516 * Fax: 910.948.3045

Popular Options

Ceramic Accents

Designer Kitchens



Fireplaces



Glamour Bathrooms



Archways and Columns



Spacious Utility Areas





Your authorized HBS Home Builder:



Building A Better Home...

Holmes Building Systems, LLC. 2863 Old Plank Rd. Robbins, NC 27325
www.HBS home.com