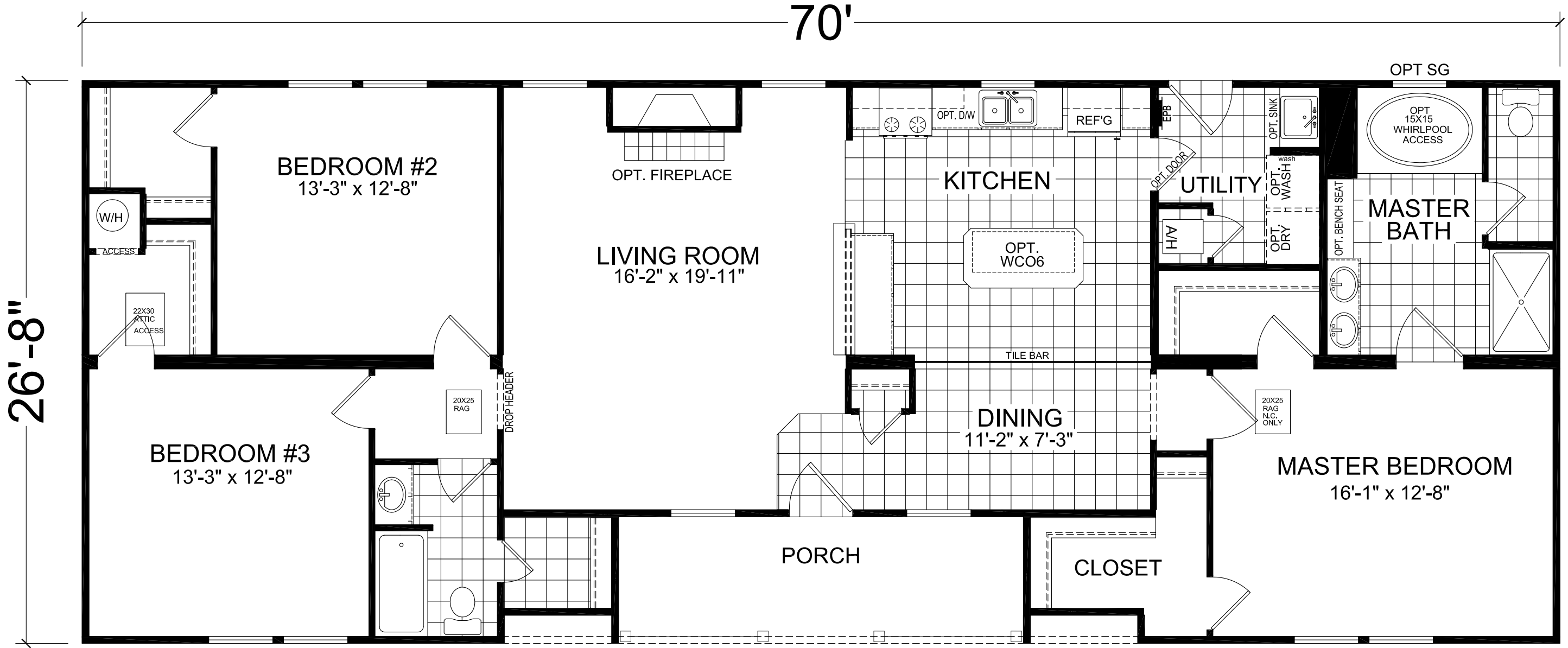


MODEL 23-870 w/ OPEN KITCHEN OPT

3 BDRM, 2 BATH
 ACTUAL SIZE: 70'-0" X 26'-8"
 TOTAL AREA: 1737 SQ.FT.
 EXCLUDING PORCH



M:\Engineering\p- Modular\Modular-Products\Production-Mod\STIMULUS MODELS\23-870\23-870 open kitchen.dwg, 12/18/2015 7:46:11 AM

26'-8"

70'

MATERIALS AND SPECIFICATIONS SUBJECT TO CHANGE WITHOUT NOTICE FOR PRODUCTION AND CODE PURPOSES. ALL DIMENSIONS ARE NOMINAL AND APPROXIMATE. SQUARE FOOTAGE IS MEASURED FROM EXTERIOR WALL TO EXTERIOR WALL AND IS A APPROXIMATE FIGURE. THIS DRAWING IS A RENDERING AND IS MEANT FOR SALE PURPOSES ONLY.

PROJECT

TITLE:	LITERATURE PLAN
MODEL:	23-870 W/OPEN KITCHEN 26'-8" x 70'-0" 3 BEDROOM 2 BATH
DATE:	12-18-15
SCALE:	
DRAWN BY:	RS
REVISED:	
	REVISIONS
SHEET NO:	L-101
PAGE:	